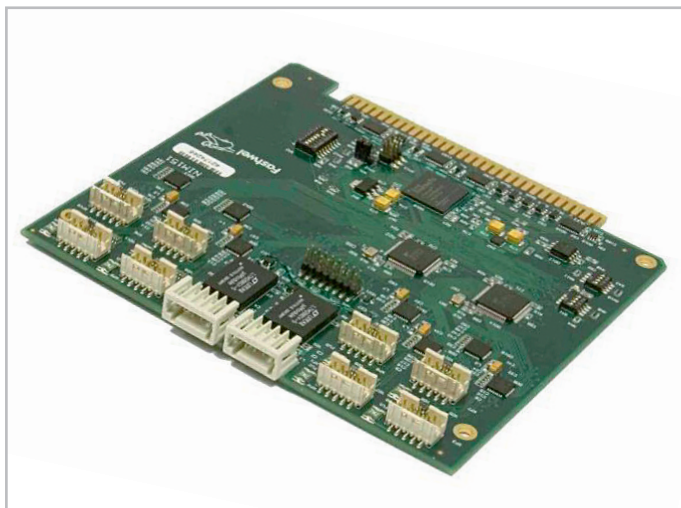


NIM151

MicroPC Multiport Module



Overview

NIM151 Multiport Module is carried out in the MicroPC standard and is designed for arranging RS232/RS422/RS485 serial interfaces.

The module uses a single slot of the MicroPC mounting frame. The device can be used with any module of CPU or microcontroller unit in the MicroPC standard.

The module is intended for the use in applications that prescribe an intensive data exchange through serial communication channel.

Features

- System Bus: 8-bit ISA bus
- LED: Indication of I/O queries (references)
- Power supply and power consumption: Module is supplied from an external DC source with a voltage of: +5 V $\pm 0,25\%$, consumption current: NIM151-01 no more than 200 mA, NIM151-02 – no more than 250 mA
- Moisture: up to 80%, non-condensing; up to 98%, non-condensing, for the /COATED option
- Operating temperature range: -40 to $+85^{\circ}\text{C}$
- Software compatibility: FDOS, FreeDOS, Windows XP (Embedded); Linux 2.6
- Weight: no more than 0.08 kg
- MTBF: no less than 540,000 hours

Technical Specifications

PCI System Bus

- 8-bit ISA Bus

Serial ports

- 4x (Quad – NIM151-01) or 8x (Octal – NIM151-02) UART channels with signals logic levels (CMOS, TTL)
- Possibility of using COM1-COM8
- All RS-232 ports are nine-wire (full), with the data exchange rate of no more than – 115.2 Kb/sec
- Two RS-422/485 ports (COM3 and COM4) – galvanically isolated, with optoisolation breakdown voltage of no more than 500 V, with the data exchange rate no more than – 115.2 Kb/sec; 64 bytes of FIFO
- 5, 6, 7, 8 bits of data, 1, 1.5 or 2 stop bits
- Data exchange rate up to 115,200 bauds
- 10-pin contacts for RS-232
- Sockets with Wago terminal blocks for the connection of RS 422/485 interfaces (COM3, COM4)

LEDs

- Indication of I/O queries (references)

Core control capabilities

- Setting the base address by switches
- Setting interruptions by switches or jumpers
- Setting operation of RS 422/485 interfaces in COM3 and COM4 ports by jumpers

Additional features

- Six dividable lines of IRQx hardware interrupts (where $x = 3, 4, 5, 6, 7, 9$)
- Address selector and ISP controller

Power supply and current consumption

- Module is supplied from an external DC source with a voltage of: +5 V $\pm 0,25\%$
- Consumption current: NIM151-01 no more than 200 mA, NIM151-02 – no more than 250 mA

Weight

- No more than 0.08 kg

Humidity

- up to 80%, non-condensing
- up to 98%, non-condensing, for the /COATED option

Resistance to mechanical stress

- Sinusoidal vibrations for the frequencies from 10 to 500 Hz, with acceleration of 5 g
- Single shocks with peak acceleration of 100 g
- Multiple shocks with peak acceleration of 50 g, number of shocks: 1000

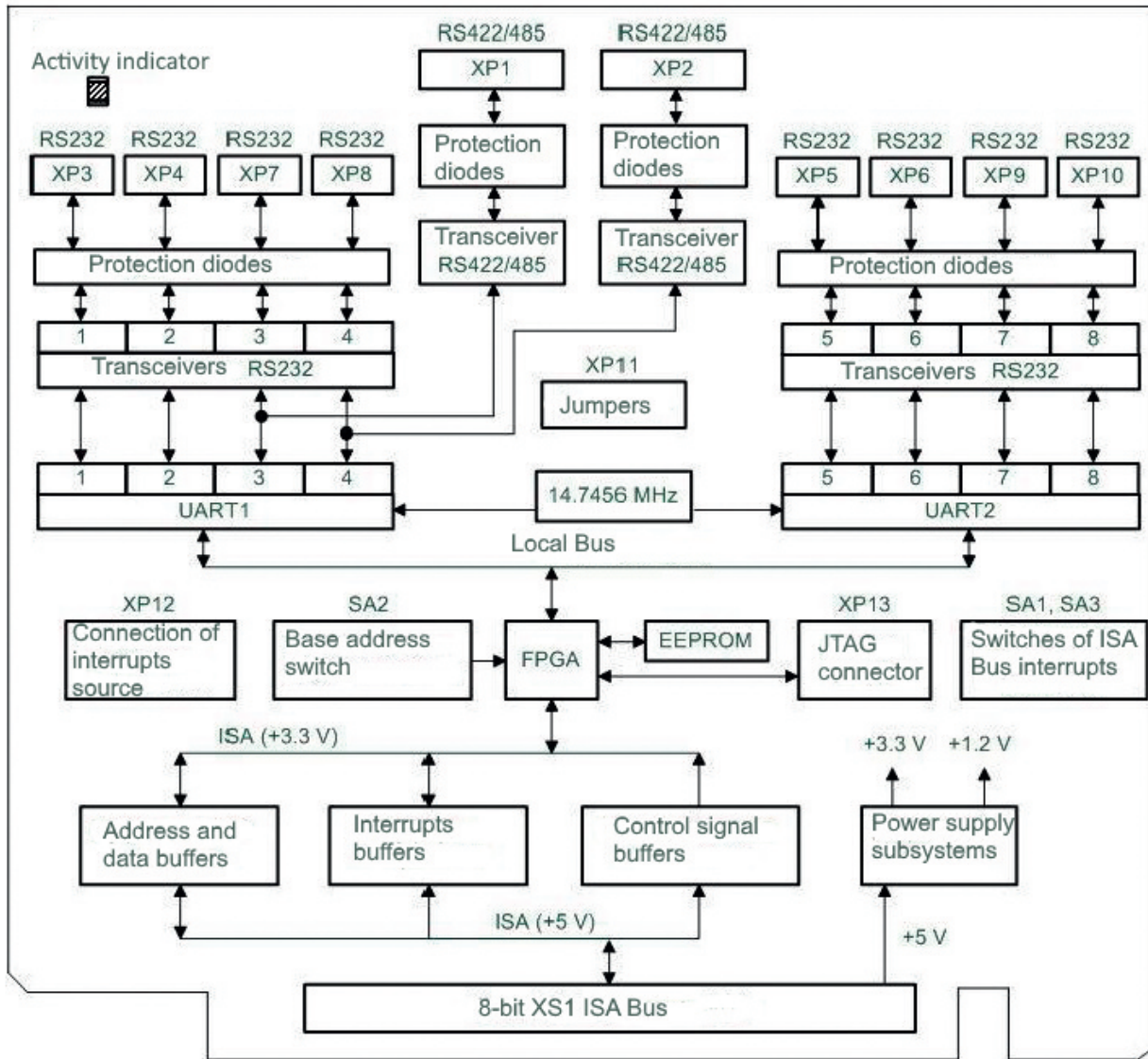
Software compatibility

- FDOS, FreeDOS
- Windows XP (Embedded)
- Linux 2.6

MTBF

- No less than 540,000 hours.

Block Diagram



NIM151

MicroPC Multiport Module

Ordering Information

NIM151 Multiport Module Configurations

NIM151 - 01 \ Option

Configurations

NIM151-01 Multiport Module, 4x UART channels

NIM355-02¹ Multiport Module, 8x UART channels

¹ The module contains a complete set of built-in interfaces and functional elements (COM1-COM8).

* Conformal coating is available, the \COATED option is added to the order.

Delivery checklist

1. NIM151 Multiport Module
2. Installation kit: 733-105 sockets with WAGO terminal blocks for connecting RS 422/485 interfaces, set of jumpers 2 mm
3. Packaging

Additional accessories (to be purchase separately)

Ordering name: ACS00023-04 – Cable adapter for the connection to COM1-COM8 (DB9F – IDC10)

Corporate Offices

FASTWEL GROUP Co., Ltd

108 Profsoyuznaya str.
Moscow, Russia 117437
Tel: +7 (495) 232-1681
Fax: +7 (495) 232-1654
E-mail: info@fastwel.com
Web: www.fastwel.com

MICROPC

READY FOR



RoHS

Ver.1.11.2019
Product specifications are subject to change without notice



Fastwel



Fastwel



Fastwel